



# Wolmanit®



■ BASF Group

## CB-Pole Bandage



### Remedial Treatment – The enveloping solution

Wooden poles are an important factor in the distribution networks of post/telecom and electricity companies. Apart from their excellent mechanical properties and their favourable environmental conduct, wooden poles are very economical constructional elements.

However, the effects of weather, wood-destroying fungi and insects take a heavy toll on wood. To protect it from premature destruction caused by destructive organisms, quite specific remedial treatment measures are required to meet the various demands of the situation at hand.

Specific remedial treatment is a significant factor in extending the service life of wooden poles and constructional timber and thus in maintaining their value.

Remedial treatment measures for wooden poles are especially important as damage can jeopardise the operational safety of entire lines.

**Perfect protection for wooden poles:  
Wolmanit® CB Pole Bandages**

specific long-term protection  
guarantees prolonged service life

highly effective  
user-friendly  
environmentally compatible

In order to achieve an adequate service-life, the combination of a high standard of impregnation together with a regular control of the installed poles and cyclical remedial treatment measures is necessary.

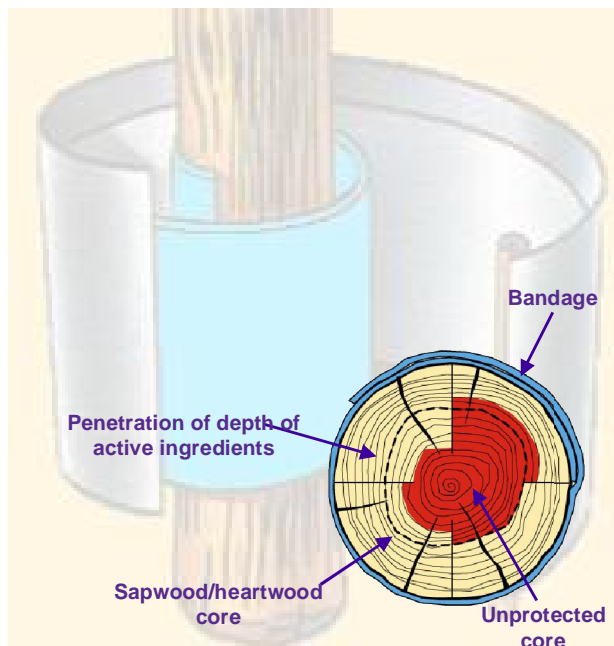
The Wolmanit® CB-pole bandage consists of a flexible synthetic matrix (foam cushion), in which the active agents copper and boron are embedded in paste form. They are sealed by a temperature-resistant, water-proof plastic foil.

The well-established combination of active agents provides protection against brown and white rot, insects, and in particular, soft rot. The Wolmanit® CB bandages achieve the required effect through diffusion of the active agents from the foam cushion into the wood. The active agents have even been proven to penetrate through creosote treated sapwood. The treatment takes effect quickly in areas in the early stages of rotting and rot is stopped.

The outstanding properties of the Wolmanit® CB-pole bandage have been confirmed in international field trials and internal testing.

Remedial treatment with Wolmanit® CB-pole bandages focuses on health and safety for users and on environmental compatibility. The bandages can be applied extremely quickly and easily. Once wrapped firmly around the pole, they can develop their full potential, providing safe and effective protection. The sealing foil not only prevents the migration of active agents into the soil, it also offers protection against mechanical damage. Used. Wolmanit® CB-pole bandages can be disposed of simply and safely.

Pole line without remedial treatment



### Wolmanit® CB-pole bandages

- Ø excellent long-term efficacy
- Ø good diffusion
- Ø good environmental compatibility

This information and all further technical advice reflects our present knowledge and experience and is only valid in connection with the disclaimer for advertising material on our homepage [www.wolman.de](http://www.wolman.de).

**BASF plc – Wolman Division**  
Earl Road / Cheadle Hulme  
Cheadle / Cheshire SK8 6QG  
peter.moran@basf.com  
Tel.: +44 (0) 77 33 22 42 95  
Irene.jones@basf.com  
Tel.: +44 (0) 161 4 88 53 29  
Fax: +44 (0) 161 4 85 54 87

**Dr. Wolman GmbH**  
Dr.-Wolman-Strasse  
76547 Sinzheim/Germany  
Phone: +49 7221/800-0  
Fax: +49 7221/800-210  
E-mail: [info@wolman.de](mailto:info@wolman.de)  
Web: [www.wolman.de](http://www.wolman.de)



**BASF Group**

Use wood preservatives safely. Always read the label and product information before use.